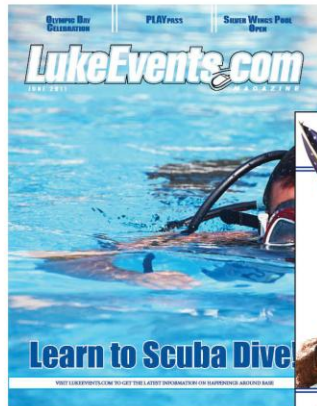


Ad Rate Sheet

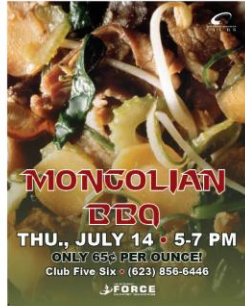
Frequency: Monthly, first of each month
Circulation: 3,000
Distribution: Delivered to base housing residents and available at numerous locations on base
Format: 20 pages 8.5"x11" Full Color
Format Files: pdf, tiff, jpeg
Deadline: Tenth of month prior to run date



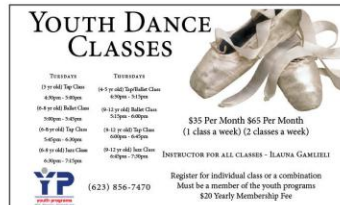
INSIDE COVERS & BACK
 8.5 X 11
 FULL BLEED AVAILABLE



FULL PAGE
 7.5 X 10
 FULL BLEED AVAILABLE



QUARTER PAGE
 3.625 X 4.875



HALF PAGE
 HORIZONTAL
 4.875 X 7.5
 VERTICAL
 3.625 X 10

Luke AFB Demographics

- Active Duty Military 4,831
- Family Members 6,000
- Youth (5-18) 4,500
- Reservists 818
- Retirees 118,900 (May-Oct)
133,630 (Nov-Apr)
- Students Rotational

	One Time	3 Month	6 Month	12 Month
Inside Covers	\$ 1,889 Per month	\$ 1,732 Per month	\$ 1,581 Per month	\$ 1,280 Per month
Back Cover	\$ 1,889 Per month	\$ 1,732 Per month	\$ 1,581 Per month	\$ 1,280 Per month
Full Page	\$ 1,467 Per month	\$ 1,354 Per month	\$ 1,247 Per month	\$ 1,046 Per month
1/2 Page	\$ 805 Per month	\$ 746 Per month	\$ 685 Per month	\$ 595 Per month
1/4 Page	\$ 490 Per month	\$ 450 Per month	\$ 415 Per month	\$ 345 Per month

56th Force Support Squadron Marketing & Publicity
 Elaine Meissner, Corporate Partnerships Program Coordinator
 E-Mail: Elaine.Meissner@Luke.af.mil Phone: 623.856.2104

